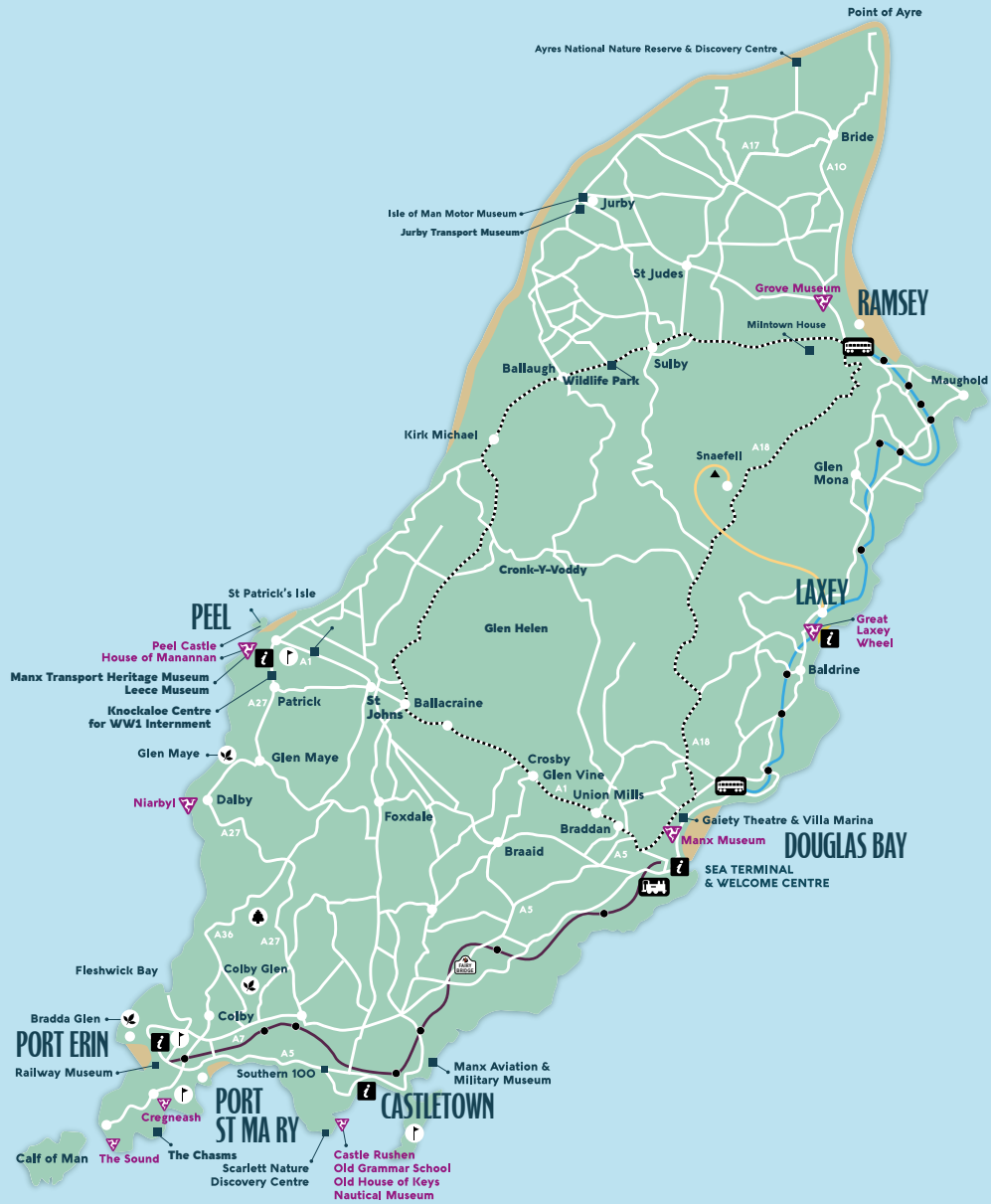


YOUR GUIDE TO TT 2026



www.visitisleofman.com | [@visitisleofman](https://www.instagram.com/visitisleofman)





WELCOME TO THE EXTRAORDINARY ISLE

The Isle of Man TT Races have given our island an international reputation as the Road Racing Capital of the World – an adrenaline-fuelled celebration of speed, endurance and daring spirit. All amidst the backdrop of our stunning Extraordinary Isle.

Once again this year's TT Races are set to be unforgettable, and our handy visitor guide is your key to unlocking the full potential of your visit. From race schedules and spectator information to transport routes and what's on, our visitor guide is here to help you navigate the island throughout the two-week period and ensure your TT experience is nothing short of extraordinary.

Safety and Respect

While the TT Races are renowned for their excitement, safety remains paramount. The races take place on public roads, and the island's infrastructure plays a crucial role in the smooth running of the event. We ask all visitors to respect local regulations, stay informed about road closures, and follow the guidance of race officials and marshals. Your cooperation ensures that the TT can be enjoyed by all in the safest possible environment.

So buckle up and get ready to enjoy the ride of your life! Whether you're a first-time visitor or a seasoned TT aficionado, the TT Races are guaranteed to deliver an experience like no other...and have you returning to the Extraordinary Isle.



LAXEY BEACH

MONDAY 25 MAY

Mountain Section (only) begins to close from 08:45. Full TT Course closure at 10:00. All roads will reopen no later than 21:30.

SPEED CONTROLLED LAP

10:45 Solo newcomers followed by Sidecar newcomers Untimed

FREE PRACTICE

11:00 Supersport, Sportbike Untimed

11:45 Sidecar Untimed

12:40 Superbike, Superstock Untimed

QUALIFYING 1

14:15 Supersport, Sportbike Timed

15:00 Sidecar Timed

15:55 Superbike, Superstock Timed

TUESDAY 26 MAY

Mountain Section (only) begins to close from 16:45. Full TT Course closure at 18:00. All roads will reopen no later than 21:30.

QUALIFYING 2

18:30 Superbike, Superstock Timed

19:20 Supersport, Sportbike Timed

20:15 Sidecar Timed

WEDNESDAY 27 MAY

Mountain Section (only) begins to close from 11:15. Full TT Course closure at 12:30.

NOTE: All roads except for the Mountain Section will reopen no later than 16:30, followed by a full TT Course closure at 18:00.

QUALIFYING 3

13:00 Supersport, Sportbike Timed

14:00 Sidecar Timed

14:55 Superbike, Superstock Timed

Full TT Course closure at 18:00. All roads will reopen no later than 21:30.

QUALIFYING 4

18:30 Superbike, Superstock Timed

19:20 Supersport, Sportbike Timed

20:15 Sidecar Timed

FRIDAY 29 MAY

Mountain Section (only) begins to close from 08:45. Full TT Course closure at 10:00. All roads will reopen no later than 16:30.

QUALIFYING 5

10:30 Superbike, Superstock Timed

11:25 Sidecar Timed

12:20 Supersport, Sportbike Timed

QUALIFYING 6

13:15 Superbike, Superstock Timed

14:20 Sidecar Timed

15:10 Supersport, Sportbike Timed

SATURDAY 30 MAY

RACE DAY 1

Mountain Section (only) begins to close from 09:00. Full TT Course closure at 10:00. All roads will reopen no later than 21:30.

10:45 RL360 Superstock TT Race 1 3 laps

13:30 Motul Sidecar TT Race 1 3 laps

SUNDAY 31 MAY

RACE DAY 2

Mountain Section (only) begins to close from 11:00. Full TT Course closure at 12:30. All roads will reopen no later than 18:30.

13:30 RST Superbike TT Race 6 laps

TUESDAY 2 JUNE

RACE DAY 3

Mountain Section (only) begins to close from 09:00. Full TT Course closure at 10:00. All roads will reopen no later than 17:00.

10:45 Monster Energy Supersport TT Race 1 4 laps

13:00 Sidecar Shakedown 1 lap

14:15 Carole Nash Sportbike TT Race 1 3 laps

15:50 Solo Practice 1 lap

WEDNESDAY 3 JUNE

RACE DAY 4

Mountain Section (only) begins to close from 09:00. Full TT Course closure at 10:00. All roads will reopen no later than 17:00.

10:45 Motul Sidecar TT Race 2 3 laps

13:30 RL360 Superstock TT Race 2 3 laps

15:30 Solo Practice 1 lap

FRIDAY 5 JUNE

RACE DAY 5

Mountain Section (only) begins to close from 09:00. Full TT Course closure at 10:00. All roads will reopen no later than 21:30.

10:45 Monster Energy Supersport TT Race 2 4 laps

14:00 Carole Nash Sportbike TT Race 2 3 laps

16:00 Senior TT Practice 1 lap

SATURDAY 6 JUNE

RACE DAY 6

Mountain Section (only) begins to close from 09:00. Full TT Course closure at 10:00. All roads will reopen no later than 21:30.

11:00 Milwaukee Senior TT Race 6 laps

CONTINGENCY	DATE	TIME	EVENT	DETAILS
	Thursday 28 May	(Daytime)	Mountain Section closes from 09:00. Full Course closes at 10:00. Roads open no later than 17:00.	
	Thursday 28 May	(Evening)	Mountain Section closes from 16:45. Full Course closes at 18:00. Roads open no later than 21:30.	
	Friday 29 May	(Evening)	Mountain Section closes from 16:45. Full Course closes at 18:00. Roads open no later than 21:30.	
	Monday 1 June	(Daytime)	Mountain Section closes from 09:00. Full Course closes at 10:00. Roads open no later than 17:00.	
	Monday 1 June	(Evening)	Mountain Section closes from 16:45. Full Course closes at 18:00. Roads open no later than 21:30.	
	Tuesday 2 June	(Evening)	Mountain Section closes from 16:45. Full Course closes at 18:00. Roads open no later than 21:30.	
	Wednesday 3 June	(Evening)	Mountain Section closes from 16:45. Full Course closes at 18:00. Roads open no later than 21:30.	
	Thursday 4 June	(Daytime)	Mountain Section closes from 09:00. Full Course closes at 10:00. Roads open no later than 17:00.	
	Thursday 4 June	(Evening)	Mountain Section closes from 16:45. Full Course closes at 18:00. Roads open no later than 21:30.	
	Sunday 7 June	(Daytime)	Mountain Section closes from 11:30. Full Course closes at 12:30. Roads open no later than 18:30.	

BEHAVIOUR

SPECTATING DO'S

Motorsport in all forms is both dangerous to take part in and to watch. Please adhere to the following advice for a safe, enjoyable TT:

- KEEP OFF THE COURSE
- RESPECT PROHIBITED AREAS
- RESPECT RESTRICTED AREAS
- FOLLOW THE ADVICE OF MARSHALS
- KEEP PHONES AWAY FROM THE RIDERS
- WAIT FOR THE ROADS OPEN CAR
- CONSIDER OTHERS WHEN PARKING
- FOLLOW OFFICIAL FEEDS FOR NEWS
- PLAN YOUR DAY

SPECTATING DON'T'S

Failure to adhere to any of the following laws and rules is an offence punishable by fines of up to £5,000 or up to six months imprisonment:

- DO NOT ENTER THE COURSE
- DO NOT ENTER PROHIBITED AREAS
- DO NOT ENTER RESTRICTED AREAS
- DO NOT DISOBEY THE MARSHALS
- DO NOT USE SELFIE STICKS
- DO NOT OVERTAKE THE ROADS OPEN CAR
- DO NOT BLOCK ACCESS ROADS
- DO NOT FLY DRONES NEAR THE COURSE
- DO NOT REMOVE ANY SIGNAGE



MARSHALS

PLEASE RESPECT OUR VOLUNTEERS

WE KINDLY ASK THAT ALL FANS AND SPECTATORS FOLLOW THE ADVICE OF MARSHALS

Please note that all Isle of Man TT Marshals have considerable legal powers including the power to remove or detain any persons deemed to be causing a danger to themselves or others. Those persons will be dealt with by the courts.

STAY INFORMED STAY SAFE

- 📍 Know what's happening, when it happens.
- 📍 Race status, schedule changes and road closures – straight from the source.
- 📍 Follow the TT Infoline on WhatsApp.

iomtraces.com/ttinfo



TRAVELLING BY BUS & RAIL



By Bus

During the TT period, Bus Vannin are operating a special TT Service. However, please note the bus services are subject to amendments or cancellations depending on racing and road closures.

Visit www.bus.im for full timetables, use www.findmybus.im to track your transport in real time, or alternatively follow [/loMBusVannin](https://www.facebook.com/loMBusVannin) on Facebook for the most up-to-date service announcements.



By Rail

Isle of Man Railways will be operating four heritage railways during the TT period, which offer a unique way to discover the island and watch the races.

Isle of Man Steam Railway – to the south of the Island, from Douglas Railway Station via Castletown to Port Erin.

Manx Electric Railway – to the east and north of the Island, from Derby Castle, Douglas via Laxey Station to Ramsey. In Laxey Station connect with the Snaefell Mountain Railway.

Snaefell Mountain Railway – operates from Laxey Station to Snaefell Summit. Alight at The Bungalow for a fantastic viewpoint to watch the races.

Douglas Bay Horse Tramway – serves Douglas Promenade. Journeys start at Derby Castle or Broadway close to The Villa Marina. Use the Horse Trams to connect with the Manx Electric Railway at Derby Castle.

For all railway timetables, visit www.rail.im or pick up an Isle of Man Railways Timetable from the Welcome Centre, Airport and railway stations.

Peak Times and Real Time Tracking

During busy periods, some buses may not be able to stop due to over-capacity. bus vannin have standby buses during these times. The bus driver will radio the bus control room who will do their best to send out standby buses to collect customers.



Scan the QR code to track your transport in real time.





THE BEST FARES: THE MORE YOU TRAVEL, THE MORE YOU SAVE

© THE SHED, LAXEY



Go Explore Card

If you want to explore the island by bus and/or rail, we would recommend purchasing a Go Explore Card. This offers unlimited travel across all buses, trains and trams throughout your stay.

Unlimited Bus, Train and Tram Travel			
Go Explore Card	Adult	Child	Family
1 Day - Paper ticket purchased on board	£22	£11	£49
3 Day	£44	£22	£94
5 Day	£50	£25	£108
7 Day	£61	£30	£132
5 Day Go Explore Heritage	£79	-	-

Go Saver Card

If you plan to just travel the island by bus, we would recommend purchasing a Go Saver Card.

Unlimited Bus Travel		
Go Saver Card	Adult	Child
1 Day - Paper ticket purchased on board	£7.50	£3.50
3 Day	£18	£8.50
5 Day	£24	£11.50
7 Day	£29	£14

Unlimited Bus Travel		
Go Saver Family	1 Adult & up to 3 Children	2 Adults & up to 3 Children
1 Day Family Saver	£10.50	£16

Hullad Oie Night Owl Premium Services

From Wednesday 28th May to Saturday 7th June, the Hullad Oie Night Owl Premium Services operate. These are the late night buses which operate between Douglas, and the North, South and West of the Island.

They depart at 00:15 or 01:15 (please note the 28th and 29th May will be 00:15 only).

Double fares apply to all Hullad Oie Night Owl Premium Services unless using a Go Explore or Go Saver Card. Half fares apply to valid Go Cards.

Discount

Please note, a £2 discount is given if you already have a Go Card to upload.

Top-ups

Top-ups can only be processed at the Welcome Centre (inside the Sea Terminal), the Airport and any manned Railway Station. Alternatively, you can buy single trips directly from your driver.

We accept contactless payments from all popular global cards and cash is accepted.

SPECIAL TT BUS SERVICES

© THOLT-Y-WILL



TT1 From South to Around the TT Course

RACE DAYS ONLY*

This service operates from the south of the island to the Quarterbridge and continues around the TT course to Ramsey as a TT6 to get you to the best viewing spots around the course.

Departing Port St Mary Harbour approximately 2½ hours before TT Course Closure, calling at Port Erin Station, Colby, Castletown, Bypass/School Hill, Castletown Railway Station and Ballasalla.

If racing is delayed to later in the day, this service does not operate and you will need to travel to Douglas by Standard Services and then catch the TT6 from Lord Street.

On returning, please travel to Douglas and transfer onto any of the south services. See TT6 return information below.

TT3 Granstand and Creg-ny-Baa

RACE DAYS ONLY*

Departing Lord Street at approximately 2 hours & 1 hour before TT Course Closure via the Grandstand to the Creg-ny-Baa grandstands and viewing areas.

Please note, if racing is delayed or on a Sunday Race Day, this service departs approximately two hours and one hour before the road closures. Approximately 10 minutes after the roads reopen, a service bus returns you to Douglas from the Creg-ny-Baa.

TT6 Around the TT Course

RACE DAYS ONLY*

Departing Lord Street approximately 1¼ hours before TT Course Closure, the TT6 serves the Quarterbridge, Glen Vine, Crosby, Ballacraigne, Laurel Bank, Cronk-y-Voddy, Kirk Michael, Ballaugh, Sulby and finishes in Ramsey.

Departing Ramsey Bus Station at 08:20*, the TT6 from Ramsey serves Sulby, Ballaugh, Kirk Michael, Cronk-y-Voddy, Ballacraigne, Crosby, Braddan Bridge and the Grandstand.

When roads reopen, service buses will operate in both directions to return you to your destination at either Ramsey or Douglas.

From the Grandstand, please travel to central Douglas to transfer onto buses for the west of the Island (Peel and Kirk Michael services).

Please note, if racing is delayed or on a Sunday Race Day, this service operates approximately 110 minutes before the scheduled road closures.

Service 19 The Isle of Man Motor Museum, Jurby

Extra services operate between Ramsey and Jurby from 28th May to 6th June to serve the Isle of Man Motor Museum. Full details on these will be published online.

Isle of Man Transport also have an on-demand bookable minibus service called **connectVILLAGES** which can be booked via the **MANNgo** app or by calling **+44 (0)1624 697440**.



BUS ROUTES FOR TT CAMPSITES



Bus Routes for TT Campsites

No.	Campsite	Service No.	Campsite & Bus Stop Information
1	Ballacallin Court (Patrick)	4, 4b, 4n	Outside entrance
2	Ballafletcher Sports Ground (Vagabonds RUFC)	1h, 5, 5c, 6a, 22h, 25h	Short walk from Hospital main entrance
3	Ballaugh Camping	5, 5a, 5c, 6, 6a, 6c, N6	Short walk from Ballaugh Bridge
4	Braddan Bridge TT Campsite (Ballafletcher)	1h, 5, 5c, 6a, 22h, 25h	Short walk from Hospital main entrance
5	Castletown (MFC) Campsite	1, 1a, 2, 2a, 11, 11a, 12, 12a, N1	800m walk from Castletown Railway Station
6	Colby Football Club Campsite	1, 2, 11, 12, N1	300m walk from Colby Bridge bus stop
7	Cronk Aashen Campsite (Barregarrow)	5c, 6c, N6c	Short walk from Barregarrow Crossroads
8	Cronkbourne Sports & Social Club (Tromode)	3, 3a, 12, 22, 22h, 25, 25h, N3	800m walk from Woodbourne Road
9	Crossags Campsite (Ramsey – behind RGS)	5, 5a, 5c, 6, 6a, 6c, N6	Short walk from RGS bus stops
10	Duke TT Village, Victoria Road	3, 3a, 25, 25h	3 to Grandstand, or 3a, 25, 25h to Victoria Road
11	Glen Dhoo Campsite (Hillberry)	1, 1a, 11, 11a, 12, 12a, 22, 22h, 25, 25h, N3	1.3km walk from Cat with No Tail bus stop
12	Glen Wyllin Campsite	5, 5a, 5c, 6, 6a, 6c, N6	Bus stop at entrance of campsite (5c & 6c in village)
13	Glendown Farm Camping Park (PSM)	1, 1a, 2a, 11, 11a, 12, 12a	950m walk from Port St Mary Promenade bus stop
14	Glenlough Campsite	5, 5a, 5c, 6, 6a, 6c, 6f, N5, N6	Bus stop at entrance of campsite
15	Governor's Bridge Campsite (Blackberry Lane)	3, 3a, 15, N3, 25, 25h	300m walk from Governor's Road bus stop
16	Isle of Man TT Campsite (Braddan AFC)	3, 3a, 25h	Short walk from last stop on Victoria Road

17	Laxey AFC Campsite	3, 3a, N3	800m walk from Laxey MER Station
18	Laxey Campsite	3, 3a, N3	400m walk from Minorca Crossroads bus stop
19	Lower Ballacottier Campsite (Ballacottier Road, Hillberry)	1, 1a, 11, 11a, 12, 12a, 22, 22h, 25, 25h, N3	2km walk from Cat with No Tail bus stop
20	Michael Utd AFC Campsite	5, 5a, 5c, 6, 6a, 6c, N6	350m walk from Kirk Michael Cannan Court bus stop
21	Nine Yards Bell Tents, Ballakermeen	3, 3a, 12, 12a, 22, 22h, 25, 25h	640m walk from Rosemount or 660m walk from Pulrose Bridge
22	Nine Yards Bell Tents, Castletown MFC	1, 2, 2a, 11, 12, 12a, N1	800m walk from Castletown Railway Station
23	Grandstand Campsite (Noble's Park)	3, 3a, 22, 22h, 25, 25h	Short walk from various bus stops
24	Old Boys Campsite (DHSOB – Blackberry Lane)	3, 3a, 15, N3, 25, 25h	300m walk from Governor's Road bus stop
25	Peel Football Club Campsite	5, 5a, 5c, 6, 6a, 6c, 6f, N5, N6	Bus stop at entrance of campsite
26	Pennybridge TT Campsite (Kirk Michael)	5, 5a, 5c, 6, 6a, 6c, N6	Bus stop at entrance of campsite
27	Quarterbridge Campsite (Douglas Rugby Club)	5, 5a, 5c, 6, 6a, 6c, 6f, N5, N6, 22, 22h, 25, 25h	Short walk from Quarterbridge bus stop or Groves Road from Airport
28	Ramsey AFC Campsite (Ballacloan Stadium)	3, 3a, 5, 5a, 5c, 6, 6a, 6c, N3, N6	400m walk from bus stop on Station Road (Tesco – Service 5/6) or 850m walk from Ramsey Bus Station (Service 3/etc)
29	St John's United FC Campsite	6, 6a, 6c, 6f, N6	Stops directly outside or short walk from Tynwald Inn (Service 5, 5a, 5c, N5)
30	Union Mills FC – TT Campsite	5, 5c, 6a, N5	750m walk from Strang bus stop
31	Sulby River Farm Campsite	5, 5a, 5c, 6, 6a, 6c, N6	1km walk from Sulby Glen Hotel
32	Knockaloe Beg Farm, Patrick	4, 4b, 4n	Short walk from bus stop at lane end
33	Saba's Glen Yurts	5, 5a, 5c, 6, 6a, 6c, 6f, N5, N6	Trollaby Lane stops in Union Mills
34	Isle of Man Campsite Onchan (Fun Barn)	3, 3a	Bus stops a short walk from entrance
35	Peel Camping Park (Derby Road)	5, 5c, 6, 6c, N5	Bus stop at entrance of campsite
36	Silly Moos Campsite	3, 3a, 5, 5a, 5c, 6, 6a, 6c, N3, N6	Travel to Ramsey and then book connectVILLAGES from Ramsey. This service only operates until 7pm
37	Ramsey Rugby Club, Mooragh Promenade	2, 3a, 5, 5a, 5c, 6, 6a, N3, N6	Travel to Ramsey then a short walk

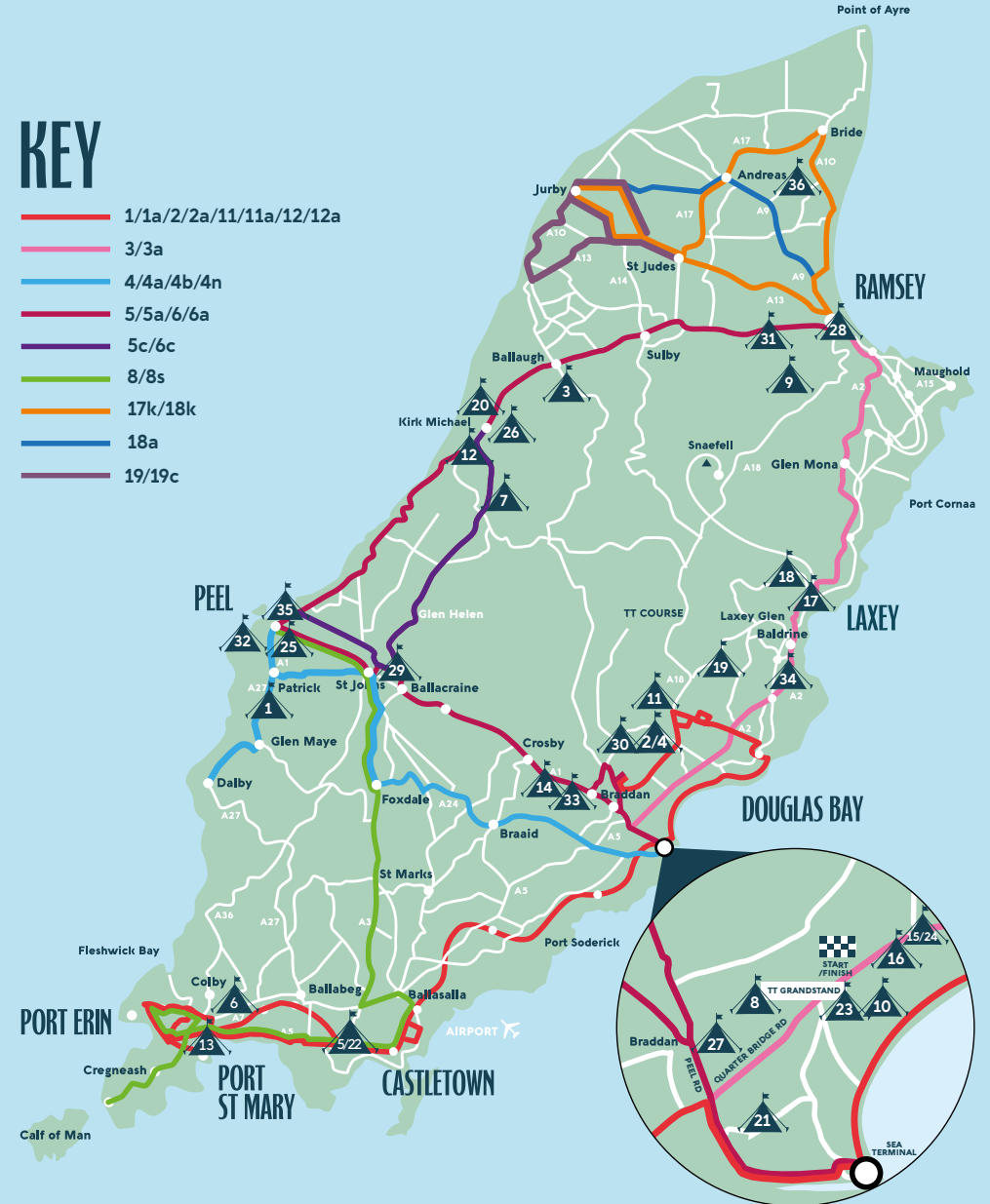
CAMPSITES ACROSS THE ISLAND

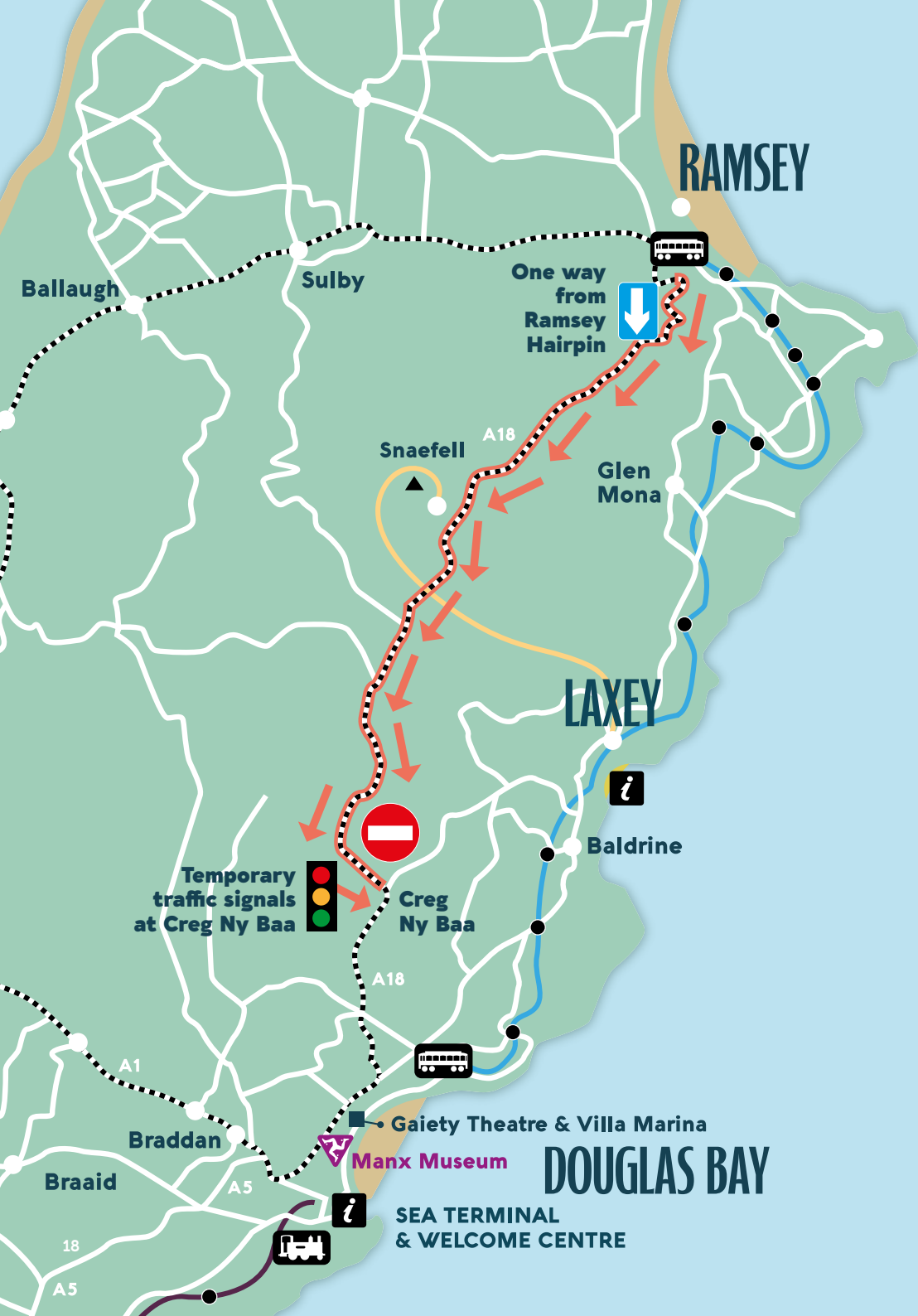
Please refer to the next page for bus routes to the campsites highlighted on the map. A full list of registered campsites is available on www.visitisleofman.com



KEY

- 1/1a/2/2a/11/11a/12/12a
- 3/3a
- 4/4a/4b/4n
- 5/5a/6/6a
- 5c/6c
- 8/8s
- 17k/18k
- 18a
- 19/19c





MOUNTAIN ROAD ONE-WAY SYSTEM

A one-way system is in operation over the Mountain Road, from Ramsey Hairpin to the Creg-ny-Baa, for the whole of the TT period.





Southern 100 Road Races

6th, 7th, 8th & 9th July 2026

Enjoying the Racing?

Why not head to the Isle of Man in July for the Isle of Man Steam Packet Company Southern 100 Road Races!

A unique event to the Isle of Man, a tantalising mass-start road racing event!

With racing Monday, Tuesday & Wednesday evening followed by all day Thursday you have plenty of time to explore our beautiful Island during the day before heading to your vantage point in the evening.

WWW.SOUTHERN100.COM



TT MARSHALS
IOMTTMARSHALS.COM



BE PART OF THE TT

Each year, a global community of thousands of volunteers come together to make motorsport history at the legendary TT races.

JOIN OUR AWARD WINNING MARSHALS TEAM

CLOSER TO THE ACTION - The most thrilling motorcycle event on the planet.

NO EXPERIENCE NECESSARY - Full training will be provided.

FLEXIBLE COMMITMENT - Marshal for as many, or as few, sessions as you can.

EXCLUSIVE REWARDS - Marshal benefits and incentives.



SCAN TO REGISTER

VISIT IOMTTMARSHALS.COM TELEPHONE 01624 618191

VISIT US DURING RACE EVENTS AT OUR MARQUEE BEHIND THE GRANDSTAND

Policing the Isle of Man TT

Keeping Our Island Safe During The TT Fortnight



WE ARE RECRUITING

What We Do During The Fortnight

Our approach is simple: firm but fair. We want everyone to enjoy the TT Fortnight while keeping people safe on and off the course.

During TT we:

- Focus on road safety and collision hotspots
- Target reckless and dangerous riding or driving
- Deploy marked and unmarked vehicles across the Island
- Support marshals and race officials
- Respond quickly to incidents and welfare concerns
- Work with partners to maintain course safety
- Help visitors enjoy the event responsibly

During 2025 we marked four years without a fatality on open roads during TT or the Manx Grand Prix, and we are committed to doing everything we can to maintain that record throughout 2026.

We Are Recruiting Experienced Officers

We are looking for experienced officers, including specialists, Sergeants and those approaching or recently retired to join us.

Policing the Isle of Man offers real variety, strong community connection, and the unique experience of supporting events like the TT. We also welcome re-joiners at Constable level and retired Sergeants on a two-year contract.

If you are looking for a new challenge and a better work-life balance, the Isle of Man could be your next chapter.



01624 631212 for general enquiries or non-urgent crimes
999 in an emergency, if there is a threat to safety or a crime is in progress



Scan to Chat With Us About Joining



Scan to Follow Our Facebook Page

OFFICIAL MERCHANDISE

GEAR UP FOR TT2026



SHOP THE 2026 COLLECTION
 ON-ISLAND AT THE FAN PARK MEGASTORE

Located in Noble's Park, Douglas



SHOP.IOMTTTRACES.COM



WHAT'S ON DURING THE TT?

Every effort has been made to ensure details are correct but please check with the event organiser.

*May involve road closures or use of the highway.



Pre-TT Classic – Southern 100 Course*

📅 22 – 24 May
📍 Billown Course, Castletown
🌐 See website
🌐 www.southern100.com



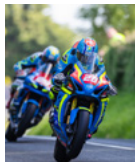
Pre-TT Sprint Enduro

📅 24 May
📍 West Kimmeragh, Bride
🕒 09:00 – 17:00
📍 ramseymotorcycleCLUB



Monster Energy Fan Park

📅 25 May – 6 June
📍 TT Grandstand
🕒 09:00 – 23:00
🌐 www.iomttraces.com



TT Qualifying & Races*

📅 25 May – 6 June
📍 TT Course
🌐 See website
🌐 www.iomttraces.com



Bushy's TT Village

📅 28 May – 6 June
📍 Villa Marina Gardens
🕒 11:00 – 00:00
🌐 www.bushysttvillage.co.uk



TT Funfair

📅 28 May – 7 June
📍 Douglas Promenade
🕒 12:00 – late
🌐 www.ttfunfair.com



Ed Gamble's Comedy Pitstop

📅 29 May
📍 Villa Marina
🕒 Doors Open 19:00
🌐 www.villagaiety.com



Ramsey Sprintfest*

📅 29 May – 1 June
📍 Market Square, Ramsey
🕒 19:00 – 23:00
🌐 www.ramsey.gov.im



Mad Daddy

FREE ENTRY

📅 30th May
📍 Villa Marina
🕒 Doors open: 19:30
🌐 www.villagaiety.com



TT Legacy Lap

📅 31 May
📍 TT Course
🕒 Departs TT Grandstand @09:30
🌐 www.iomttraces.com



The Henry Cole Tour

📅 31 May
📍 Gaiety Theatre
🕒 Doors open: 19:30
🌐 www.villagaiety.com



Douglas TT Beach Race

📅 1 June
📍 Douglas Beach
🕒 18:00 – 21:00
📍 peverilmcc



Port Erin TT Fun Day*

📅 1 June
📍 Port Erin
🕒 10:00 – 21:00
🌐 www.porterin.gov.im



Killer Queen

📅 1 June
📍 Villa Marina
🕒 Doors open: 19:30
🌐 www.villagaiety.com



DC/AC - The Final Stand

📅 2 June
📍 Villa Marina
🕒 Doors open: 19:00
🌐 www.villagaiety.com



Davy Knowles & His Band

📅 3 June
📍 Gaiety Theatre
🕒 Doors open: 19:00
🌐 www.villagaiety.com



Awesome Party Band

FREE ENTRY

📅 3 June
📍 Villa Marina
🕒 Doors open: 19:30
🌐 www.villagaiety.com



Moddey Dhoo Peel TT Motorcycle Show

📅 4 June
📍 Peel
🕒 10:30 – 17:00
🌐 www.moddeydhoomcc.co.uk



Totally 80s

FREE ENTRY

📅 4 June
📍 Villa Marina
🕒 Doors open: 19:30
🌐 www.villagaiety.com



Henning Wehn – Acid When

📅 4 June
📍 Gaiety Theatre
🕒 Doors open: 19:00
🌐 www.villagaiety.com



Red Arrows

📅 4 June
📍 Douglas
🕒 19:30
🌐 www.visitisleofman.com



TT Firework Display

📅 6 June
📍 Douglas
🕒 23:00
🌐 www.visitisleofman.com



Scan the QR code to view full list of events on the Visit Isle of Man Website.



THE ISLE OF MAN, there's more to iTT...

The TT Races have given the Isle of Man an international reputation as the Road Racing Capital of the World – an adrenaline-fuelled celebration of speed, endurance and daring spirit. But beyond the roar of engines lies something even more powerful... the spirit of an Extraordinary Isle.



📍 SPOOYT VANE WATERFALL AT GLEN MOOAR



📍 THE AYRES NATIONAL RESERVE



📍 AQUABIKES AT PORT ERIN



📍 CREGNEASH VILLAGE

This is a place where wild beauty meets deep-rooted heritage. Where breathtaking coastal paths, ancient castles, outdoor adventures, and diverse wildlife invite you to explore at your own pace. From pulse-pounding experiences to peaceful escapes, the Isle of Man offers a journey unlike any other – whether you're a motorsport fanatic or a seeker of something slower.

Experience what else our Extraordinary Isle has to offer beyond the race track.

Discover more at www.visitisleofman.com

Dean and family
enjoy a better way
of life, all year
round...

LOCATE
ISLE OF MAN 



locate.im/tt

19-28 AUGUST 2026



CLASSIC TT RACES

Five races, legendary machines, and today's TT riders back on the bikes that shaped the sport. A full week of nostalgia, including a special 30-year celebration of John McGuinness.

IOMTTANCES.COM/CLASSIC

STAY ON THE RIGHT TRACK

ENJOY THE ISLE OF MAN'S COUNTRYSIDE RESPONSIBLY THIS TT



HELP US PROTECT THE ISLAND'S ENVIRONMENT

To protect the environment, kindly stay on designated green lanes and greenway roads exclusively. Avoid travelling over any open hill land. This season is crucial for wildlife, particularly protected ground-nesting birds like Hen Harrier and Curlew. Disturbing these birds is illegal. Additionally, livestock are with young during this period, so please be mindful not to cause them distress.

RESPECT OUR UPLAND LANDSCAPE

Be mindful of the heathland and tracts of peat lying adjacent to many of the green lanes and greenways which can become damaged and eroded when people travel wide of the proper track. Use legal routes to access the TT course, and please shut gates behind you, including at points of entry and exit.

EXPLORE WITH THE OUTDOOR LEISURE MAP

Scan the QR code to access the Island's Outdoor Leisure Map, detailing green lanes and greenway roads in the vicinity of the TT course. Maps are also available from the Welcome Centre located at the Sea Terminal, contactable at +44 1624 686801.



SCAN ME



FIRE SAFETY BE WILDFIRE AWARE



Barbecues, campfires and camp stoves can very easily spread out of control, and drier, warmer weather increases the risk of wildfires. We want to continue protecting the Island's communities and environment, sensitive habitats and the wildlife that call it home.



Check first with the landowner if barbecues, campfires & camp stoves are permitted.



Only use barbecues in a suitable and safe area, such as on a raised, flat surface away from long vegetation. Never leave them unattended.



Ensure that your barbecue, campfire or camp stove is fully extinguished and cold before disposing of the contents.



Extinguish & dispose of cigarettes/ E-cigarettes properly.



Keep a bucket of water or sand nearby for emergencies.



Do not leave any litter including bottles or glass. Sunlight shining through glass can start large fires. Take litter home or put them in a waste/recycling bin.



Never light an open fire in the countryside. Bring a picnic with you as an alternative.



Embers from barbecues, campfires and campfires can easily be carried by the wind and light surrounding vegetation.

If you see a fire in the countryside, report it immediately by calling 999 and ask for the fire service. Don't put yourself in any immediate danger by attempting to tackle fast-spreading fires. Leave the area as soon as possible.

Useful contacts:

For further Fire Safety advice contact IOM Fire & Rescue Headquarters: +44 1624 647300

For Highways & Rights of Way queries contact Department of Infrastructure: +44 1624 850000

To discuss Upland & Recreational Management contact Department of Environment, Food and Agriculture: +44 1624 695701

For Mapping and Visitor advice contact IoM Welcome Centre: +44 1624 686801

MOTOR MUSEUMS ON THE ISLE OF MAN

60 D 12 H 53 M 36 S



The Isle of Man is a haven for motorbike enthusiasts, never more so than during the Isle of Man TT Races.

If you're planning a visit, be it during the racing or outside of it, make sure to check out these incredible motor museums that celebrate the island's rich motoring heritage when you've not got a hedge to be sat on.



Murray's Motorcycle Museum

From personal collection to a full museum, many long time visitors of the Isle of Man TT Races, or indeed their fathers or grandfathers, will know Murray's Motorcycle Museum. Once situated in the building that now houses Victory Café at the Bungalow, the bikes returned to their original home in Santon just before the TT centenary. An ever-evolving collection, Murray's Motorcycle Museum is a treasure trove for motorcycle enthusiasts. The museum, established in 1953, boasts over 150 bikes, ranging from the late 1800s to modern times, and in fact the stories of how those bikes came and left the collection over the years is almost as interesting as the bikes themselves.

📍 Santon Villa, New Castletown Road, IM4 1EN
 🎫 £10 per person

Leece Museum

Situated in Peel, the Leece Museum mainly offers a unique glimpse into the local history of Peel, but below the main gallery, in the infamous 'Black Hole', lives a collection of classic motorcycles. As well as the bikes, there are sets of leathers to be seen whilst soaking in the atmosphere of the space which was once a holding cell.

📍 The Old Courthouse, East Quay, Peel, IM5 1AR
 🎫 FREE

Jurby Transport Museum

Housed in a former RAF aircraft hangar, the Jurby Transport Museum offers a fascinating look at the island's transport history. The museum features a wide range of vehicles, including motorcycles, cars, lorries, buses, and trams. With a number of restoration projects ongoing, every visit will be different from the last, with volunteers working real-time on the vehicles in the museum.

📍 Hangar 230, Jurby Industrial Estate, IM7 3BD
 🎫 FREE (with option to donate to the museum)

Manx Museum TT Gallery

The Manx Museum in Douglas features a dedicated TT Gallery that delves into the history and culture of the Isle of Man TT Races. With a range of machinery on display, some highlights include Mike Hailwood's 1979 Senior TT winning Suzuki, an AJS motorcycle ridden in the 1914 Junior TT – one of very few verified pre-First World War TT motorcycles to exist – and all the spectacular full-sized Mercury trophies which have been presented to winners since the start of racing in 1907. The plaques around the base of each read like a who's who of motorcycle racing history legends.

📍 Kingswood Grove, Douglas, IM1 3LY
 🎫 FREE (with option to donate to the museum)

Isle of Man Motor Museum

Located in Jurby, the Isle of Man Motor Museum is a must-visit for any petrolhead. Home to over 500 unique vehicles, including more than 300 motorcycles, the museum showcases everything from early motorised bicycles to modern superbikes, including iconic TT winners and Bonneville record holders. The museum is also the proud new owner of a number of the old TT Course Signs!

📍 Jurby, IM7 3BZ
 🎫 £22 for adults, £11 for children aged 5-15.
 Concessions for retirees, students, and those with disabilities are priced at £20

Be part of **history**.
Be part of a **world**
record attempt.



PILATES

WORLD RECORD ATTEMPT

KNOCKALOE - ISLE OF MAN
19TH JULY 2026

10AM - 5PM

BROUGHT TO YOU BY RAMSEY CROOKALL
IN COLLABORATION WITH 34 MOVES
& VISIT ISLE OF MAN



Ramsey Crookall
Established 1946
Members of the London Stock Exchange



Come for
the **record**.
Stay for the
experience.

Be Part of a World Record

Join us as we aim to beat 3,486 participants and set a new world record for the largest Pilates class ever. Open to all ages and abilities.

Wellness Festival & Charity Village

Experience a lively day filled with community spirit, creativity, and well-being, featuring local producers and wellness brands. Engage with charities and community projects, and spaces to relax, recharge, and connect, including free sessions in the Movement Zone.

More info:
iomworldrecord.com
or email:
info@iomworldrecord.com



USEFUL INFORMATION

Money & Mobile

Currency

The Isle of Man has its own currency with the same denominations as UK sterling. UK currency is legal tender in the Isle of Man but Manx currency is not accepted in the UK, although notes can be exchanged in UK banks.

Banks & Cash Machines

Most high street banks have premises on the Isle of Man, predominantly in Douglas. ATMs are available in all major towns around the Isle of Man. Manx bank notes are dispensed from all cash machines apart from those situated at the Sea Terminal and the Airport, where English notes are issued.

Doctors & Hospitals

Noble's Hospital

Noble's Hospital, Strang, Braddan, IM4 4RJ
+44 (0) 1624 650000 (for enquiries)

Manx Emergency Doctor Service (MEDS)

Noble's Hospital, +44 (0) 1624 650355

Accident & Emergency (A&E)

+44 (0) 1624 650040 (for enquiries) or
for life threatening emergencies call 999

Ramsey Cottage Hospital

Cumberland Road, Ramsey, IM8 3RH
+44 (0) 1624 811811 (for enquiries)

Travel

Isle of Man Steam Packet Company

The Steam Packet Company
+44 (0) 1624 661661 (Reservations Team) /
www.steam-packet.com

Isle of Man Airport (Ronaldsway)

+44 (0) 1624 821600 (for enquiries) /
www.airport.im

Road Closures

For information on closures, diversions, roadworks, temporary speed limits and forthcoming events, visit:
www.gov.im/roadwatch

Parking

Policy disc parking zones are in operation in main towns and villages. Where signposted, display a car parking disc showing the time of arrival or you may be subject to a fine. There is no policy for motorcycle parking. Discs are available from vehicle hire firms, the Welcome Centre, Police Stations, Post Offices and local Commissioners' Offices.

